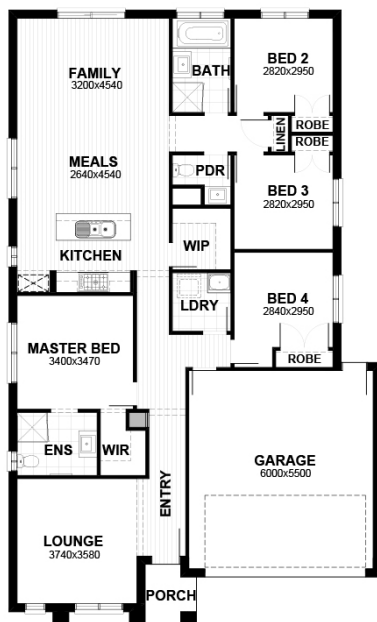




## HOUSE &amp; LAND PACKAGE

Fixed Price **\$472,790\***LOT 421 Selbourne Street \*\*\*INCL FHOG !!!,  
Strathtulloh4  2  2  2 **ALDEN 20**

LOT SIZE 350 sqm

HOUSE AREA 182.31 sqm

1000 The 1000  
**MILLSTONE****Inclusions**

- Build Your Dream With Fixed Price Site Costs & Connections
- Developer & Council Requirements
- Timber Flooring to Entry/Kitchen/Meals/Dining (House Specific)
- Carpet to Bedrooms and Rear Passage (House Specific)
- Tiles to Wet Areas (Laundry, W.C, Bathroom, Ensuite & Powder Rm (House Specific)
- Exposed Aggregate Driveway Up To 36m2
- Evaporative Cooling
- Microwave & Trim Kit
- Dishwasher
- 2590mm High Ceiling to Sgl Storey & Grnd Flr of Dbl Storey
- Blinds to Standard Windows (Incl sliding doors)
- 1600mm wide Double Basin Vanity Unit to Ensuite
- 40mm Cat 1 Edge Stone Benchtops to Kitchen
- (2no) Banks of 2 Pot Drawers with Soft Closers to Kitchen

**For more information contact  
Varinder on 0433 300 773**

\* Package price is based on standard home, standard façade unless specified, builder's preferred siting and current promotion. Pricing may vary due to actual land availability. Sherridon Homes reserves the right to change prices without notice. Fixed price packages are subject to developer's design review panel for final approval. First Home Buyer price less First Home Owner Grant subject to SRO eligibility criteria. Photos for illustration purposes only and include examples of upgrades not included in the package price. Build zones apply. BAL rating up to 12.5 included (if applicable). Should client variations alter the requirements to achieve compliance, Sherridon Homes will debit or credit the client via a post contract variation. Contact sales consultant for more information regarding inclusions, promotions, rebates, pricing or special conditions. For additional terms and conditions see [www.sherridonhomes.com.au/terms-conditions](http://www.sherridonhomes.com.au/terms-conditions). Package price correct at 2021-03-15

Call **1300 188 668** or visit

Sherridon Pty Ltd | 56 Barclay Road, Derrimut, Victoria 3026 | VIC Builder's Licence: CDB-U 50039 | P +61 3 8390 5000 |

E [info@sherridonhomes.com.au](mailto:info@sherridonhomes.com.au)